

System Data Sheet

System Description

ProPress[®], ProPress XL[™] and ProPress XLC are safe, reliable, and economical copper pipe installation systems that use modern cold press connection technology for a wide assortment of more than 500 fittings in dimensions ranging from 1/2" to 4".

Applications

Tubing: K, L, and M hard copper tubing from 1/2" to 4" and soft copper tubing in 1/2" to 1-1/4" diameters. All tubing must comply with the ASTM B88 standard. ProPress fittings are approved for installations in both above and below ground applications. Per code, local inspector approval must be obtained prior to installation below ground.

Operating Parameters:

Operating Pressure 200 PSI Max.
Test Pressure 600 PSI Max.
Low Pressure Steam 15 PSI Max.
Vacuum 29.2" Mercury Max. @ 68°F
Operating Temperature 0°F - 250°F

Approved Applications:

- Potable water
- Hydronic heating (w/ Glycol)
- Chilled water
- Compressed Air (200 PSI Max.)
- Non Medical Gases (140 PSI Max.)
- Fire Sprinkler (175 PSI Max.)
- Low Pressure Steam (15 PSI Max.)
- Vacuum (29.2" Mercury Max. @ 68°F)

System Benefits

- Fast and Easy to Use
- Flameless
- Permanent Connections
- Wide Capacity from 1/2" to 4"
- Large Selection of Fittings
- Consistent Professional Appearance
- Less Equipment Required
- Environmentally Friendly Connection System
- Versatility of Fittings and Tools for Variety of Applications

Fittings

Viega ProPress fittings are offered in 500+ configurations including: Elbows, Couplings, Reducers, Tees, Reducing Tees, Threaded Adapters, Unions, Caps, and Flanges. All Threaded 1/2"- 2" fittings are bronze.

Smart Connect[™] (SC Feature)

In ProPress 1/2" - 4" dimensions, the Smart Connect Feature assures leakage of liquids and/or gases from inside the system past the sealing element of an **unpressed** connection. The function of this feature is to provide the installer quick and easy identification of connections which have not been pressed prior to putting the system into operation.

RIDGID Pressing Tools			
Model	330C	330B	100B
Volts	120v	14.4v Battery	14.4v Battery
Amps	5.2A	27.2A	24A
Weight (w/out jaw)	9 lbs.	10 lbs.	7.5 lbs.

Tools

RIDGID offers three pressing tools for connecting ProPress fittings.

- 330-C Corded Tool (1/2" to 4")
- 330-B Battery powered Tool (1/2" to 4")
- 100-B Battery powered Tool (1/2" to 1")
- 1/2" to 4" fittings are pressed in 4-7 sec.

History

ProPress has been used in Europe since the late 1980s and in the U.S. since the late 1990s for a variety of applications. Backed by two plumbing leaders with over 175 years of combined excellence.

Warranty

Viega ProPress products carry a 50-year warranty against defects in material and workmanship. The RIDGID Lifetime Warranty applies to tools, jaws and crimp rings from Ridge Tool Company.

Approvals and Certificates

NSF International

www.nsf.org/business/search_listings/index.asp#nname (enter "Viega")

IAPMO

<http://pld.iapmo.org/> (enter "Viega")

UL

<http://database.ul.com/cgi-bin/XYV/template/LISEXT/1FRAME/gfilenbr.html> (enter "ex6157")

ABS

(American Bureau of Shipping)
<http://www.eagle.org/typeapproval/contents.html> (enter "Viega")

CSA International

<http://www.csa-international.org/product/> (enter "Viega")

FM

INTERNATIONAL APPROVALS

- Deutsch Verein des Gas-und Wasserfachese.V. (DVGW)
- Lloyd's Register (LLOYD'S)
- Det Norske Veritas (DNV)
- Registro Italiano Navale (RINA)
- Bureau Veritas (BV)
- KIWA

Compliant with

- ICC International Plumbing Code
- UPC Uniform Plumbing Code
- PHCC National standard plumbing code
- Florida Building Code, Volume II Plumbing Code
- NFPA 13, 13D, and 13R

Contact your local Viega or RIDGID representative for details on local approvals

For more information on RIDGID products contact:

Ridge Tool Company
400 Clark Street, Elyria, Ohio 44036
Demos, Literature: 800-769-7743
Technical inquiries: 800-519-3456
Availability: 888-743-4333
Web: www.ridgid.com

ProPress® Warranty



VIEGA LLC LIMITED WARRANTY PROPRESS® FITTINGS AND VALVES

Subject to the conditions and limitations in this Limited Warranty, Viega LLC (VIEGA) warrants to wholesalers and licensed plumbing and mechanical contractors in the United States and Canada that its PROPRESS fittings, when properly installed in non industrial and non marine applications and under normal conditions of use, will be free of failure from manufacturing defect for a period of fifty (50) years from date of installation and that its PROPRESS valves, when properly installed in non industrial and non marine applications and under normal conditions of use, will be free of failure from manufacturing defect for a period of two (2) years from date of installation.

Under this Limited Warranty, you only have a right to a remedy if the failure or leak resulted from a manufacturing defect in the products covered by this warranty and the failure or leak occurred during the warranty period. You do not have a remedy under this warranty and the warranty does not apply if the failure or any resulting damage is caused by (1) components other than those manufactured or sold by Viega; (2) not designing, installing, inspecting, or testing the ProPress fittings or valves in accordance with Viega's installation instructions in effect at the time of the installation; applicable code requirements; and accepted industry practice; (3) improper handling and protection of the product prior to and during installation, inadequate freeze protection, exposure to water pressures or temperatures or in applications outside acceptable operating conditions; (4) acts of nature such as, but not limited to, earthquakes, fire, flood, or lightning, or (5) external environmental causes, such as water quality variations, aggressive water, or other external chemical or physical conditions.

In the event of a leak or other failure of the parts covered by this warranty, it is the responsibility of the property owner to obtain and pay for repairs. Only if the warranty applies will Viega be responsible for the remedy under this warranty. The part or parts which you claim failed should be kept and Viega contacted by writing to the address below or telephoning 1-877-843-4262 within thirty (30) days after the leak or other failure and identifying yourself as having a warranty claim. You should be prepared to ship, at your expense, the product which you claim failed due to a manufacturing defect and document the date of installation. Within a reasonable time after receiving the product, Viega will investigate the reasons for the failure, which includes the right to inspect the product at Viega. Viega will notify you in writing of the results of its review.

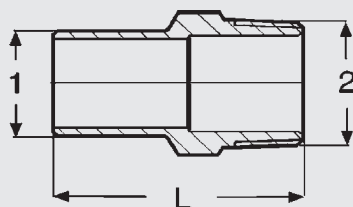
In the event that Viega determines that the failure or leak was the result of a manufacturing defect in the part covered by this warranty and that this warranty applies, the EXCLUSIVE AND ONLY REMEDY under this warranty shall be the reimbursement for repair and/or replacement of the part. VIEGA SHALL NOT BE LIABLE FOR ANY CONSEQUENTIAL OR OTHER DAMAGE (FOR EXAMPLE, WATER OR PROPERTY OR MOLD REMEDIATION) UNDER ANY LEGAL THEORY AND WHETHER ASSERTED BY DIRECT ACTION, FOR CONTRIBUTION OR INDEMNITY OR OTHERWISE.

THE ABOVE WARRANTY IS IN LIEU OF ALL OTHER WARRANTIES, EXPRESS OR IMPLIED, INCLUDING BUT NOT LIMITED TO THE IMPLIED WARRANTIES OF MERCHANTABILITY AND FITNESS FOR A PARTICULAR PURPOSE. If a limited warranty shall be found to apply, such warranty is limited to four years. Other than this Limited Warranty, Viega does not authorize any person or firm to create for it any other obligation or liability in connection with its products.

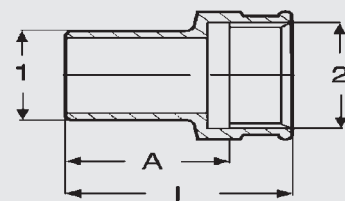
This Limited Warranty gives you specific legal rights and you also may have other rights which may vary from state to state. This warranty shall be interpreted and applied under the law of the state in which the product is installed and is intended as a Commercial Warranty.

ProPress Warranty 0408

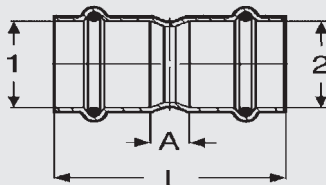
Dimensional Documentation



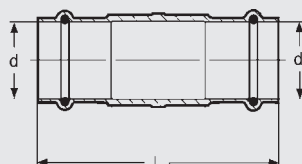
Adapter FTG x M			
Stock Code	Size	Material	L
	1 2		(in)
77957	1/2"x 3/8" NPT	Bronze	1.732
77962	1/2"x 1/2" NPT	Bronze	1.969
77967	1/2"x 3/4" NPT	Bronze	2.047
77972	3/4"x 1/2" NPT	Bronze	2.028
77977	3/4"x 3/4" NPT	Bronze	2.146
14553	1"x 3/4" NPT	Bronze	2.146
77982	1"x 1" NPT	Bronze	2.362
77987	1-1/4"x 1-1/4" NPT	Bronze	2.657
77992	1-1/2"x 1-1/2" NPT	Bronze	3.051
77997	2"x 2" NPT	Bronze	3.543



Adapter FTG x F				
Stock Code	Size	Material	A (in)	L (in)
	1 2			
78002	1/2"x 3/8" NPT	Bronze	1.031	1.437
78007	1/2"x 1/2" NPT	Bronze	1.118	1.654
78012	1/2"x 3/4" NPT	Bronze	1.181	1.732
78017	3/4"x 1/2" NPT	Bronze	1.217	1.752
78022	3/4"x 3/4" NPT	Bronze	1.256	1.811
22218	1"x 1/2" NPT	Bronze	1.433	1.969
22213	1-1/4"x 1/2" NPT	Bronze	1.630	2.165
78027	1"x 1" NPT	Bronze	1.307	1.969
78032	1-1/4"x 1-1/4" NPT	Bronze	1.484	2.165
78037	1-1/2"x 1-1/2" NPT	Bronze	1.878	2.559
78042	2"x 2" NPT	Bronze	2.335	3.031



Coupling C x C with Stop				
Stock Code	Size	Material	A (in)	L (in)
	1 2			
78047	1/2"	Copper	0.236	1.732
78052	3/4"	Copper	0.394	2.205
78057	1"	Copper	0.394	2.205
78062	1-1/4"	Copper	0.394	2.441
78067	1-1/2"	Copper	0.394	3.307
78072	2"	Copper	0.472	3.622



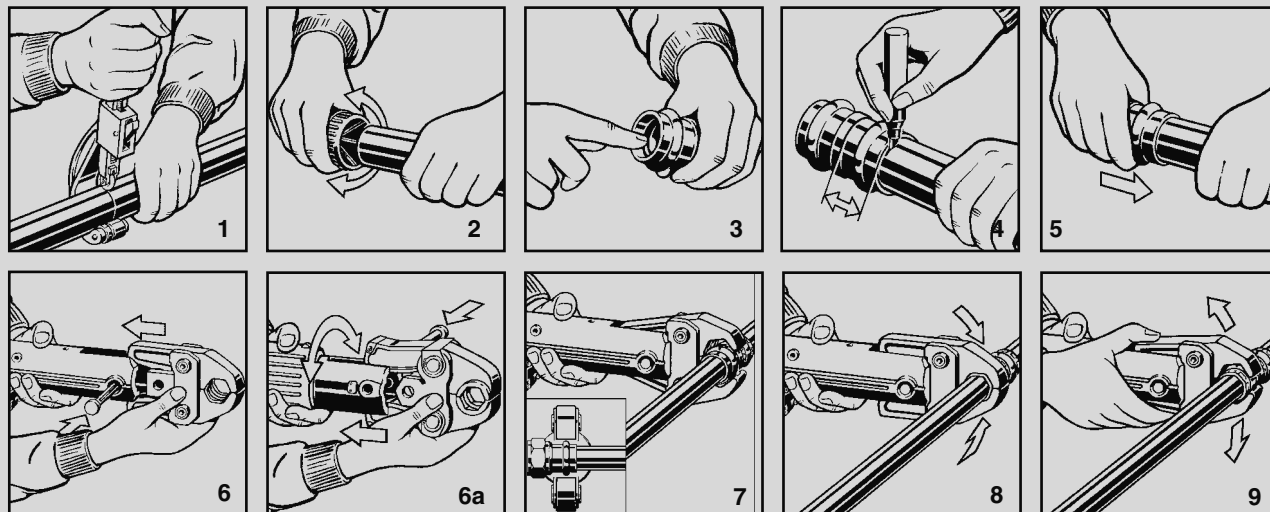
Coupling C x C No Stop			
Stock Code	Size	Material	L (in)
	1 2		
78172	1/2"	Copper	1.732
78177	3/4"	Copper	2.205
78182	1"	Copper	2.205
78187	1-1/4"	Copper	2.441
78192	1-1/2"	Copper	3.307
78197	2"	Copper	3.622

Product Instructions

For Types K, L and M Hard Copper Tubing in 1/2" to 2" and Soft Copper Tubing in 1/2" to 1-1/4"

⚠ WARNING

Read and understand all instructions for installing ProPress fittings. Failure to follow all instructions may result in extensive property damage, serious injury or death.



ProPress Insertion Depth Chart

Tube Size	1/2"	3/4"	1"	1-1/4"	1-1/2"	2"
Insertion Depth	3/4"	7/8"	7/8"	1"	1-7/16"	1-9/16"

1. Cut copper tubing at right angles using displacement type cutter or fine-toothed steel saw.
2. Remove burr from inside and outside of tubing to prevent cutting sealing element.
3. Check seal for correct fit. Do not use oils or lubricants. Use only ProPress Shiny Black EPDM or Dull Black FKM Sealing Elements.
4. Mark proper insertion depth as indicated by the ProPress Insertion Depth Chart. Improper insertion depth may result in improper seal.
5. While turning slightly, slide press fitting onto tubing to the marked depth. **Note: End of tubing must contact stop.**
6. Insert appropriate Viega jaw into the pressing tool and push in holding pin until it locks in place.
7. Open the jaw and place at right angles on the fitting. Visually check insertion depth using mark on tubing.
8. Start pressing process and hold the trigger until the jaw has engaged the fitting.
9. After pressing, the jaw can be opened again.
10. For applications requiring ProPress with FKM sealing elements, remove the factory installed EPDM sealing element and replace with FKM sealing element.



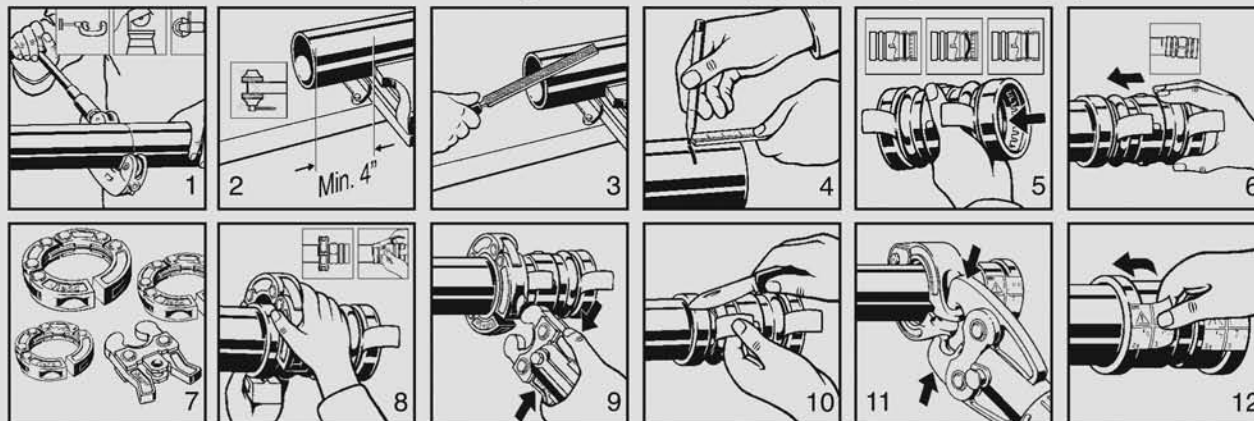
Pressure Testing: Pressure testing is to be carried out in accordance with local codes. ProPress includes the Smart Connect (SC) Feature providing quick and easy identification of **unpressed** connections during the pressure testing process. **Unpressed connections are located by pressurizing the system with air or water. When testing with air the pressure range is 1/2 PSI to 85 PSI maximum. When testing with water the pressure range is 15 PSI to 85 PSI maximum.** The SC Feature is an integral part of the design of the fitting assuring leakage of liquids and/or gases from inside the system past the sealing element of an unpressed connection. The SC Feature is removed during the pressing process creating a leak-proof, permanent connection.

Product Instructions

Copper Fittings for Types K, L and M Hard Copper Tubing in 2-1/2" to 4"

⚠ WARNING

Read, understand and follow all instructions for installing ProPress XL fittings. Failure to follow all instructions may result in extensive property damage, serious injury or death.



ProPress XL Insertion Depth Chart

Tube Size	2-1/2"	3"	4"
Insertion Depth	2-1/8"	2-1/8"	2-1/2"

1. Cut copper tubing at right angles using displacement type cutter or fine-toothed steel saw.
2. Keep end of tubing a minimum of 4" away from the contact area of the vise to prevent possible damage to the tubing in the press area.
3. Remove burr from inside and outside of tubing to prevent cutting sealing element.
4. Mark proper insertion depth as indicated by the ProPress XL insertion depth chart. Improper insertion depth may result in an improper seal.
5. Check seal and grip ring for correct fit.
6. While turning slightly, slide press fitting onto tubing to the marked depth. Do not use oils or lubricants.
7. ProPress XL fitting connections must be performed with ProPress XL Rings and Actuator. Use of other ring set or actuator will result in an improper connection. See Ridgid Operator's Manual for proper tool instructions.
8. Open XL Ring and place at right angle on the fitting. XL Ring must be engaged on the fitting bead. Check insertion depth.
9. With Actuator inserted into the tool, open the Actuator as shown.
10. Place Actuator onto XL Ring and start pressing process. Hold the trigger until the Actuator has engaged the XL Ring. Keep extremities and foreign objects away from XL Ring and Actuator during pressing operation to prevent injury or incomplete press.
11. Release Actuator from XL Ring and then remove the XL Ring from the fitting on completion of press. Remove elastic control ring from fitting indicating press has been performed.
12. For applications requiring ProPress XL with FKM sealing elements, remove the factory installed EPDM sealing element and replace with FKM sealing element.



Pressure Testing: Pressure testing is to be carried out in accordance with local codes. ProPress XL also includes the Smart Connect Feature providing quick and easy identification of unpressed connections during the pressure testing process. Unpressed connections are located by pressurizing the system with air or water. When testing with air the pressure range is 1/2 PSI to 85 PSI Maximum. When testing with water the pressure range is 15 PSI to 85 PSI Maximum. The SC Feature is an integral part of the design of the fitting assuring leakage of liquids and/or gases from inside the system past the sealing element of an unpressed connection. The SC Feature is removed during the pressing process creating a leak-proof, permanent connection.

Product Instructions

Copper Fittings for Types K, L and M Hard Copper Tubing in 2-1/2" to 4"

⚠ WARNING

Read, understand and follow all instructions for installing ProPress XL-C fittings. Failure to follow all instructions may result in extensive property damage, serious injury or death.



ProPress XL-C Insertion Depth Chart

Tube Size	2-1/2"	3"	4"
Insertion Depth	1-5/8"	1-7/8"	2-3/8"

1. Cut copper tubing at right angles using displacement type cutter or fine-toothed steel saw.
2. Keep end of tubing a minimum of 4" away from the contact area of the vise to prevent possible damage to the tubing in the press area.
3. Remove burr from inside and outside of tubing to prevent cutting sealing element.
4. Mark proper insertion depth as indicated by the ProPress XL-C insertion depth chart. Improper insertion depth may result in an improper seal.
5. Check seal and grip ring for correct fit.
6. Illustration demonstrates proper fit of grip ring, separation ring and sealing element. Use only ProPress Shiny Black EPDM sealing elements.
7. While turning slightly, slide press fitting onto tubing to the marked depth. Do not use oils or lubricants.
8. ProPress XL-C fitting connections must be performed with ProPress XL-C Rings and V2 ACTUATOR. Use of ProPress XL Rings and/or Actuator (for Bronze fittings) will result in an improper connection. See Ridgid Operator's Manual for proper tool instructions.
9. Open XL-C Ring and place at right angles on the fitting. XL-C Ring must be engaged on the fitting bead. Check insertion depth.
10. With V2 ACTUATOR inserted into the tool, open the V2 ACTUATOR as shown and connect V2 ACTUATOR to the XL-C Ring.
11. Place V2 ACTUATOR onto XL-C Ring and start pressing process. Hold the trigger until the Actuator has engaged the XL-C Ring. Keep extremities and foreign objects away from XL-C Ring and V2 ACTUATOR during pressing operation to prevent injury or incomplete press.
12. Release V2 ACTUATOR from XL-C Ring and then remove the XL-C Ring from the fitting on completion of press. Remove elastic control ring from fitting indicating press has been performed.



Pressure Testing: Pressure testing is to be carried out in accordance with local codes. ProPress XL-C also includes the Smart Connect Feature providing quick and easy identification of unpressed connections during the pressure testing process. Unpressed connections are located by pressurizing the system with air or water. When testing with air the pressure range is 1/2 PSI to 85 PSI Maximum. When testing with water the pressure range is 15 PSI to 85 PSI Maximum. The SC Feature is an integral part of the design of the fitting assuring leakage of liquids and/or gases from inside the system past the sealing element of an unpressed connection. The SC Feature is removed during the pressing process creating a leak-proof, permanent connection.

VEIEGA • One Company... One Partner... Delivering System Solutions.

301 N. Main, Floor 9 • Wichita, KS 67202 • Ph: 877-Viega-NA • Fax: 316-425-7618 • E-Mail: service@viega.com • www.viega-na.com